



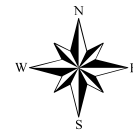
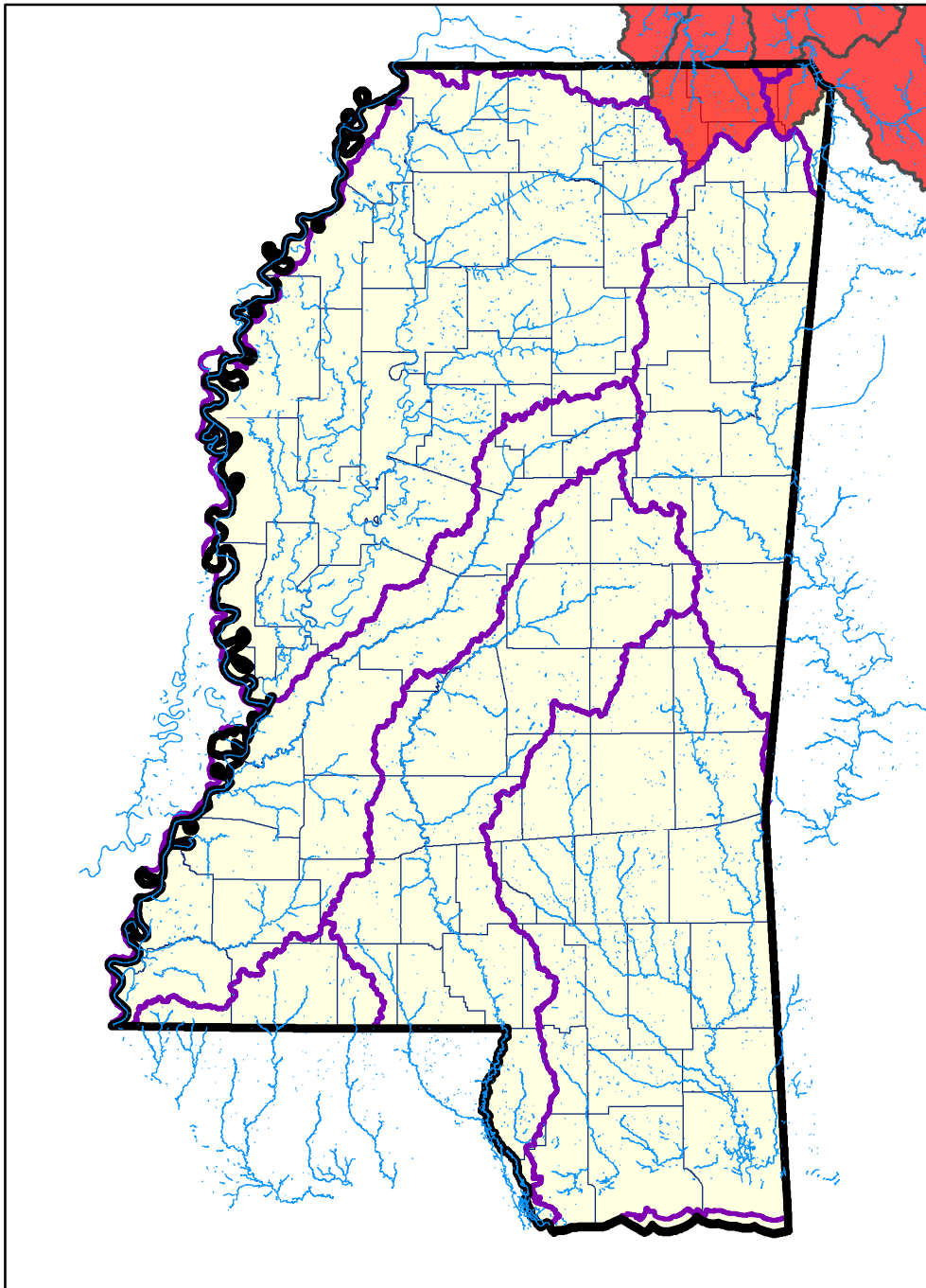
# Crayfishes of Mississippi

## Crayfish Distribution Map

*Procambarus (Pennides) ablusus*



Each red HUC8 represents either 1) at least one locality record or 2) a more general record of the species in the watershed from a museum collection or published literature. Each blue county represents a record providing the county, but not more specific locality information. The species does not necessarily occur throughout each highlighted area. See "Crayfish and Website Info" for more about data sources and potential sources of errors. Note that the authors have not examined most museum material included in the database.



0 50 100  
Kilometers

### Legend

- River or Stream
- Basin Boundary
- HUC 8 Distribution
- County Distribution
- County Boundary
- State of Mississippi

Map Prepared:  
06/03/2014

For more information, please contact:  
**Dr. Susan Adams, Ph.D**

Research Aquatic Ecologist  
US Forest Service, Southern Research Station  
Center for Bottomland Hardwoods Research  
1000 Front St., Oxford, MS 38655  
(662) 234-2744 ext. 267  
[sadams01@fs.fed.us](mailto:sadams01@fs.fed.us)

**Crayfishes of Mississippi Website...**  
<http://www.srs.fs.usda.gov/crayfish/>